

## Connect Case Center: Send and manage scan data quickly and reliably

**A seamless transition into digital impressions and CAD/CAM dentistry: With the new Primescan from Dentsply Sirona, the new Connect software and the Connect Case Center, it's a breeze. The portal for cooperation with the lab, which has been known as Sirona Connect until now, has been completely overhauled and is now even more convenient and flexible. Validated interfaces enable secure transmission of data to many important partners.**

**Charlotte/Bensheim, July 15, 2019.** Easy, quick, and above all, accurate – intraoral scanning with the new Primescan from Dentsply Sirona meets the clinical requirements for impressions, making it a first-class method. The Connect Case Center is a portal for further processing of the scan with versatile options and full flexibility. The Connect Case Center replaces the Sirona Connect Portal which, until now, has enabled practices to link to laboratories that use the inLab software.

The basic function of the new platform is the secure transmission of scan data and case information. Photos can also be transmitted to the lab as attachments. If you want to communicate directly with the dental technician, you can make use of the chat function.

### **Numerous interfaces, improved communication with the Inbox**

The new Connect Case Center has numerous validated interfaces to important partners of the dental practice: The seamless connection to Simplant enables users to use the Dentsply Sirona implant planning service quickly and easily. There is also a seamless interface to Atlantis, the central production service for patient-specific abutments and suprastructures on implants.

The connection to SureSmile was created for the IDS 2019. This enables the user to order full service aligners, a model print, IDB trays for indirect bracket bonding and the production of aligners directly from the practice following the clinical diagnosis and Smile Design in the lab. Labs that work with the inLab software are also seamlessly integrated and can offer CEREC users an attractive design service.

One significant new feature is the Connect Case Center Inbox – receiver software that enables all labs to access the Connect Case Center, regardless of their CAD software. The Inbox clearly displays all of the cases that need to be processed with the corresponding information on a dashboard and it also enables a 3D preview of the order, which can be accepted with a mouse click. For further processing with the preferred lab software, the Inbox generates common open data formats, such as STL and OBJ.

The Inbox has proven to be particularly convenient in the workflow with inLab or exocad labs that are connected via appropriate interfaces: It

## Press Contact

Dr. Tanja Lauinger  
Senior Corporate Public Relations  
Manager  
Sirona Straße 1  
5071 Wals bei Salzburg, Austria  
T +43 (0) 662 2450-629  
F +43 (0) 662 2450-540  
[tanja.lauinger@dentsplysirona.com](mailto:tanja.lauinger@dentsplysirona.com)

Kerstin Schicha  
Edelman GmbH  
Schöneberger Straße 15  
D-10963 Berlin, Germany  
T +49 (0) 30 2218290-70  
[kerstin.schicha@edelman.com](mailto:kerstin.schicha@edelman.com)  
[www.edelman.com](http://www.edelman.com)

Marion Par-Weixlberger  
Vice President Public Relations &  
Corporate Communications  
Sirona Straße 1  
5071 Wals bei Salzburg, Austria  
T +43 (0) 662 2450-588  
F +43 (0) 662 2450-540  
[marion.par-weixlberger@dentsplysirona.com](mailto:marion.par-weixlberger@dentsplysirona.com)

### **About Dentsply Sirona**

Dentsply Sirona is the world's largest manufacturer of professional dental products and technologies, with over a century of innovation and service to the dental industry and patients worldwide. Dentsply Sirona develops, manufactures, and markets a comprehensive solutions offering including dental and oral health products as well as other consumable medical devices under a strong portfolio of world class brands. Dentsply Sirona's products provide innovative, high-quality and effective solutions to advance patient care and deliver better and safer dental care. Dentsply Sirona's headquarter is located in Charlotte, North Carolina. The company's shares are listed in the United States on NASDAQ under the symbol XRAY.

Visit [www.dentsplysirona.com](http://www.dentsplysirona.com) for more information about Dentsply Sirona and its products.

provides a format that is validated by exocad that includes model and case data, color information and preparation margins. In this way, dentists also have the option of cooperating with exocad labs in a validated workflow.

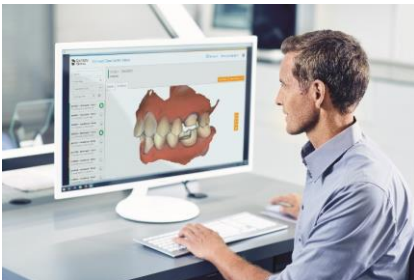
### **Portal for all intraoral scanners from Dentsply Sirona**

When purchasing a Primescan AC or a new Omnicam AC, dentists also receive the Connect software, which enables quick and easy access to the Connect Case Center. The user also gets a license for the Inbox, which can be passed on to the lab of choice, so that the lab is also able to access the portal. Of course, labs can also buy their own Inbox license to obtain access to the Connect Case Center.

"Users of both Primescan and Omnicam benefit from modern digital impression technology, while remaining flexible in selecting partners for the manufacture of restorations, orthodontic devices and implant abutments," explains Dr. Alexander Völcker, Group Vice President CAD/CAM and Orthodontics at Dentsply Sirona. "The new Connect Case Center thus provides the ideal environment for the digital workflow between laboratory and practice."

### **IMAGES**

are available to [> download](#) on the website.



*Image 1: Dentsply Sirona's Connect Case Center replaces the Sirona Connect Portal, with both proven and new functions. Via the Inbox, all labs can access the Connect Case Center.*

